

CENTER DRIVE

SPECIFICATIONS

Frames:

2 7/8" high aluminum extrusion

2 7/8" high stainless steel

Conveyor Widths:

2 1/8" – 100 1/2"

Drives:

Center

Direct or Below

Live Load Capacity:

Up to 50 lbs/ft.

FEATURES

- Space saving conveyor
- Drive mounts along conveyor
- Design flexibility
- Belts are 1/2" less than frames
- Wide variety of belt sizes and types
- Precision machined conveyor components
- Low profile to work in tight places
- Rollers are machined tapered
- Belts are factory tracked
- Endless belts require less maintenance than metal laced belts
- Conveyors are rated for industrial environments
- Supports are modular design
- Controls are Nema 12 rated to meet factory requirements

Low Profile Center Drive Conveyor



APPLICATIONS

Transportation
Accumulation
Sortation
Indexing
Part Orientors
Metering Conveyors
Assembly Lines
Work Stations

BELT TYPES

Fabric
Wire mesh
Plastic chain



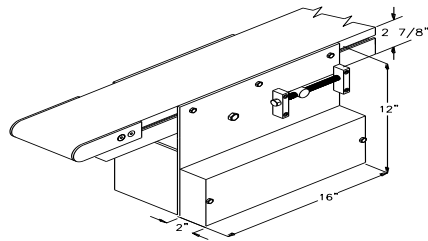
MCKENZIE

Center Drive

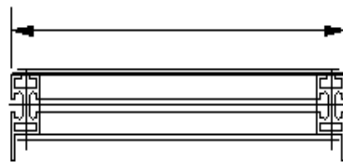


Standard Sizes

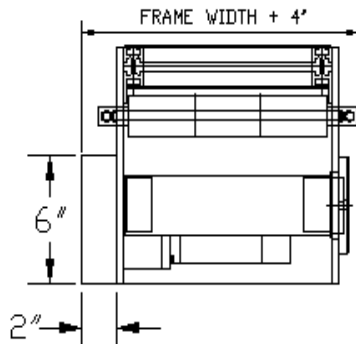
Frame Width	Belt Width
2 1/8"	1 5/8"
3 1/2"	3"
4 1/2 "	4"
6 1/2 "	6"
8 1/2"	8"
10 1/2"	10"
12 1/2"	12"
14 1/2"	14"
16 1/2"	16"
18 1/2"	18"
20 1/2"	20"
22 1/2"	22"
24 1/2"	24"



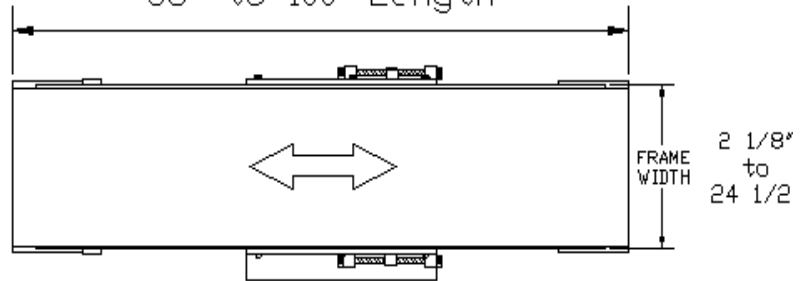
BELT WIDTH =
FRAME WIDTH - 1/2"



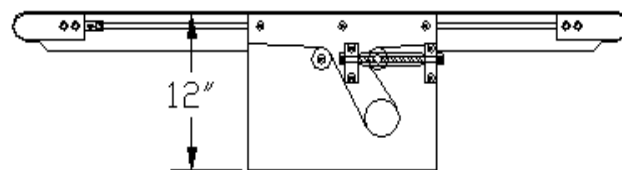
Frame



36" to 100' Length



Plan View



Side View